

SUSANNE ZOTTL
ARCHITECTURE MAG. ARCH.

SUSANNE.ZOTTL@ZOTTLBUDA.AT
ASLANGASSE 10/2/4
1190 VIENNA AUSTRIA
WWW.ZOTTLBUDA.AT
PHONE +431 3208838 FAX +9

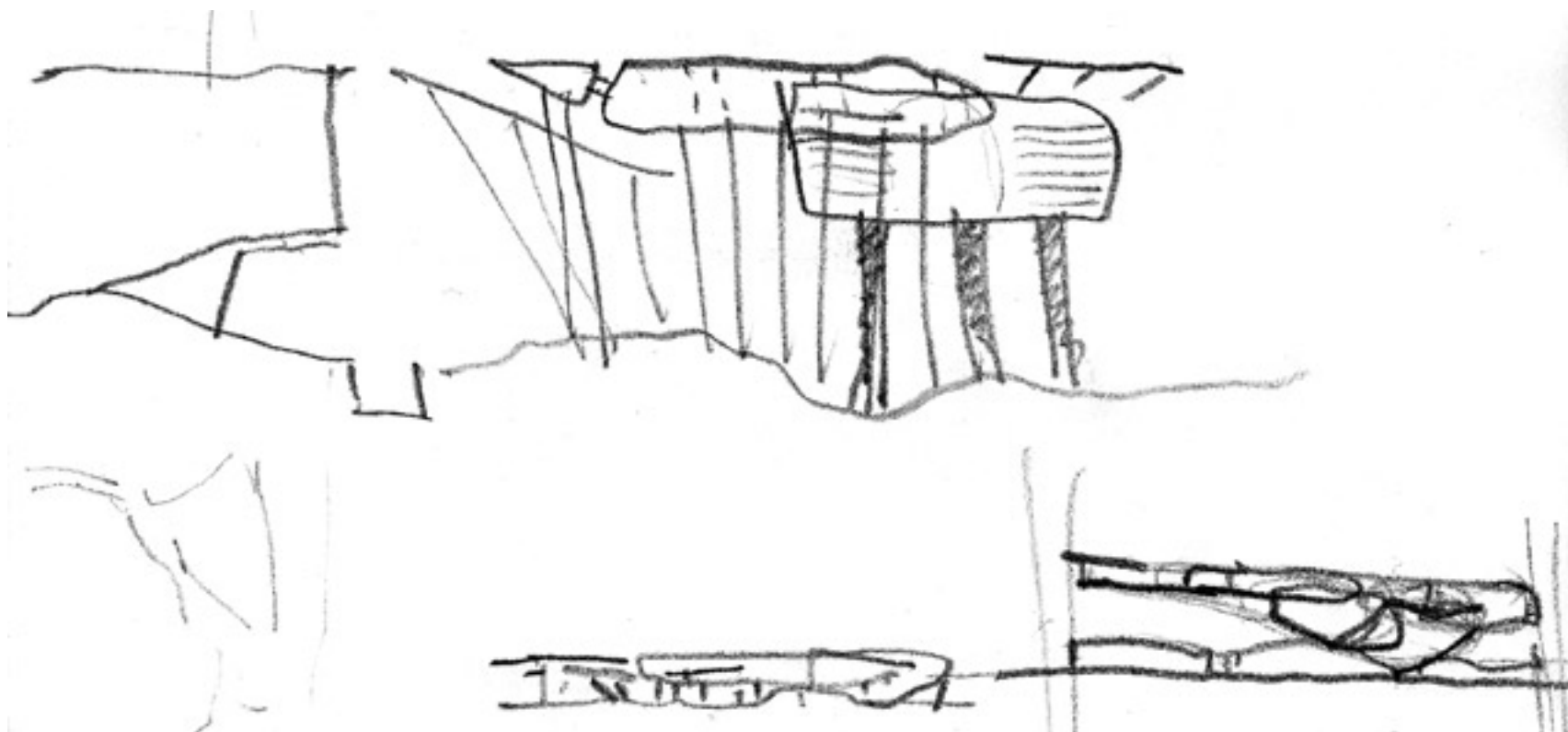
SCI-ARC
VERTICAL STUDIO
LOS ANGELES

ADVISOR: THOM MAYNE

The project attempts to focus on a condition illustrated by photos which interpret the "found space" on the site as a space that suggests missing complexity in the city of los angeles. The state of concentration - both physical, as an agglomeration, and mental, by an individual - forms the base for the creative and innovative process and is obtained within the city by density and diversity of its elements. Los angeles, being a melting pot of various cultures and functions, does however, in its physicality, not utilize these potentials. The city is mainly experienced as a two-dimensional one. Introducing into the system the z-axis connotes the critical "point of view" from above to below and vice versa. Overlapping coexisting layers of the city will start to influence and inform each other. Different functions are no longer solely distributed on the horizontal ground plane which as the only level of reference is being questioned by the act of introducing verticality as a means of generating space.

SKETCH

1992



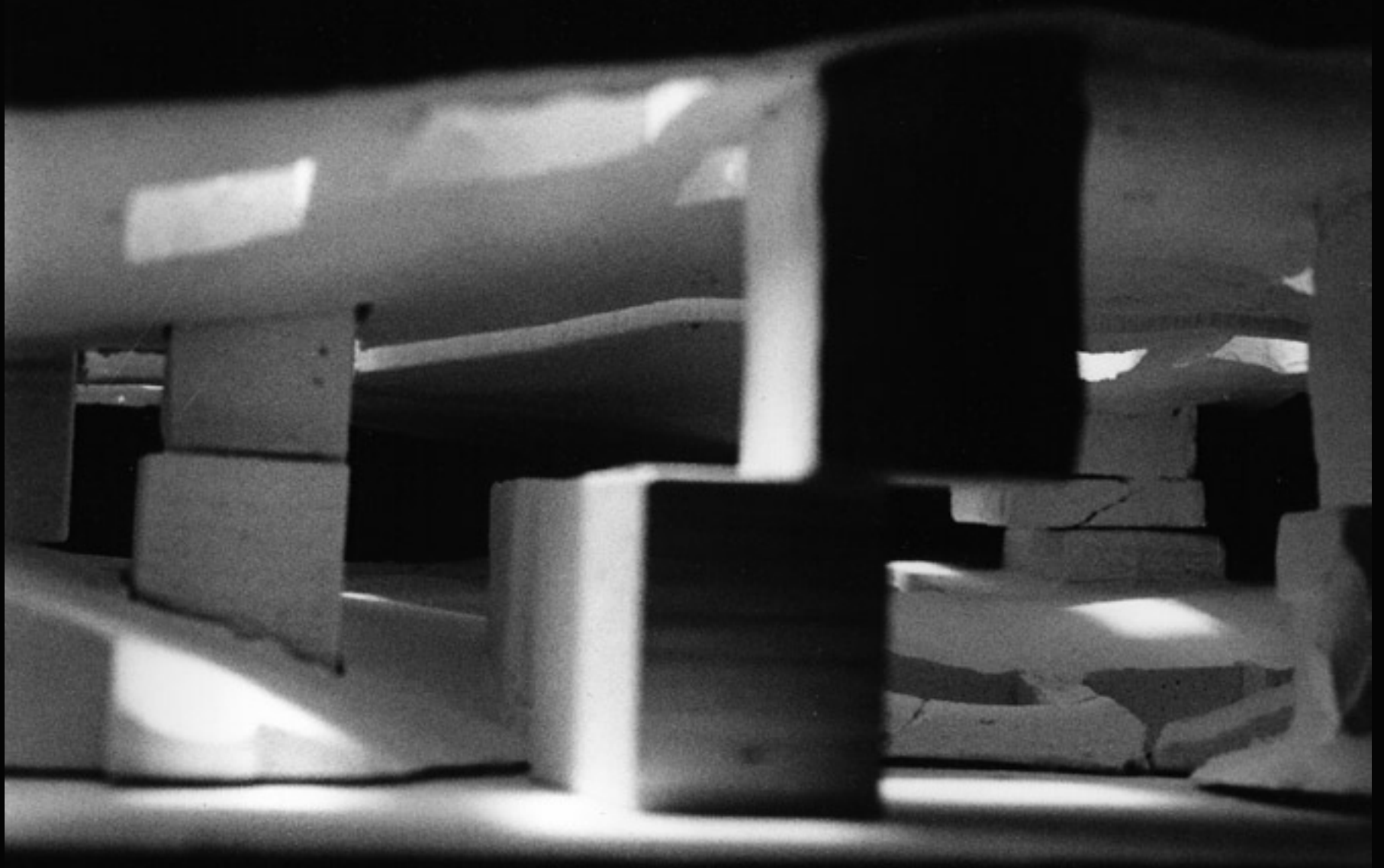
SUSANNE ZOTTL
ARCHITECTURE

SCI-ARC
VERTICAL STUDIO
LOS ANGELES
ADVISOR: THOM MAYNE
MODEL
1992



SUSANNE ZOTTL
ARCHITECTURE

SCI-ARC
VERTICAL STUDIO
LOS ANGELES
ADVISOR: THOM MAYNE
MODEL
1992



SUSANNE ZOTTL
ARCHITECTURE

SCI-ARC
VERTICAL STUDIO
LOS ANGELES
ADVISOR: THOM MAYNE
MODEL
1992

